

Digging a little deeper

On our website and in the summary report for Vital Signs, we have provided a number of statistics for each of our areas. Following is much more detailed data and sources for each statistic.

Overview

Trends

Children's vulnerability

In some ways, the lives of our children seem to be improving, but many children still lack basic needs like food and a roof over their heads.

- Even though our poverty rate has improved, the vulnerability of our kindergarten children is increasing in metro Vancouver. The Early Development Index used a questionnaire to measure children's vulnerability in 2008-09. The study found our children are increasingly vulnerable in physical health and well-being, social competence, emotional maturity, and communication and general knowledge. Only their language and cognitive development was not showing increased vulnerability.
Human Early Learning Partnership at UBC
- New Westminster made considerable improvements in decreasing the vulnerability of its children across all Early Development Index scales from 2001 to 2009.
Human Early Learning Partnership at UBC

- Three-quarters (76%) of Vancouver youth rate their mental health as very good or excellent, but youth in Calgary and Toronto say they feel better: 82% of youth in Calgary and 87% of youth in Toronto rate their mental health very good or excellent.
Canadian Community Health Survey
- Nearly one-third (31%) of the people who use BC's food banks are children, while their Greater Vancouver Food Bank Society estimates 40% of their clients were children.
Canadian Association of Food Banks Hunger Count 2009 and Greater Vancouver Food Bank Society

Challenges

Unemployment and the recession

Getting a foothold in life is always a challenge for young people in our region. Starting in 2008, it became more difficult than ever for youth to find work, whether it was a summer job, work out of high school or their first career position.

- Youth unemployment for ages 15 to 24 jumped 58% from 2008 to 2009, to a rate of 12%.
- In Toronto, youth unemployment was even higher at 19%, and in Montreal it was 18%.
Community Foundations of Canada

Progress

Child poverty decreasing

Our child poverty rate peaked at 22% in 2002 but the good news is it has improved remarkably. The bad news is 13% of our children still live in poverty

- The rate has steadily declined from 2004 to 2008, which reflects a national decline. However, our child poverty rate is still higher than Calgary and Toronto.
Community Foundations of Canada

Early Childhood

Daycare

27,139 child care spaces in Vancouver, Surrey, Burnaby and North Shore municipalities 2010 [\[More\]](#)

Median spending

\$2,450 was the annual median amount spent on child care costs, higher than both Toronto and Montreal 2007 [\[More\]](#)

Child care costs

Increased at least 10% over three years for city of Vancouver children under 5 2009 [\[More\]](#)

Youth and transition age (18-19)

Youth mental health

76% of youth rate their mental health as very good or excellent - in Calgary it's 82% and Toronto 87% 2009 [\[More\]](#)

Youth unemployment

Jumped 58% in just one year for ages 15 to 24 2009 [\[More\]](#)

Health

Infant deaths

Our infant mortality rate was 3.5 deaths for every 1,000 births 2007 [\[More\]](#)

Underweight babies

5.6% of newborns had a low birth weight (under 2,500 grams) - a rate that was lower than the Canadian average 2008-09 [\[More\]](#)

Vulnerability

Child poverty

down to 13% from a high of 22% in 2002
Reflects a national trend 2008 [\[More\]](#)

Poverty under six

17% of children under six live in poverty after tax and 22% before tax 2006 [\[More\]](#)

CHILDREN AND YOUTH

EARLY CHILDHOOD

Availability and Capacity of Licensed Daycare
Data Summary
In 2010, there are at least 27,139 spaces in child care facilities in Vancouver, Surrey and Burnaby, as well as the North Shore municipalities, combined.
Date
2010
Geography
Municipalities of Vancouver, Surrey, Burnaby, North Shore
Description

Number of Child Care Facilities and Capacity, 2009/2010

	Number of Facilities	Capacity
Total, City of Vancouver	595	11,142
<i>Licensed Group day care under 36 Months</i>	51	646
<i>Licensed group day care 30 months to School age</i>	98	2463
<i>Licensed family child care</i>	201	1227
<i>Out of school child care</i>	115	4059
<i>Preschool child care</i>	119	2582
<i>Occasional child care centres</i>	11	165
Total, City of Surrey	373	5,999
Total, City of Burnaby	221	4,248
Total, District North Vancouver	152	3,123
Total, City North Vancouver	68	1,322
Total, District West Vancouver	49	1,305
TOTAL	1,458	27,139

Comparison

N/A

Data Considerations

For selected municipalities. Data for Surrey includes after-school care, daycare, pre-school etc and also includes facilities that have multiple licenses for these services. Data for Burnaby includes "licensed not required" family child care programs, defined as operations which provide care for no more than two children at a given time who are unrelated to the caregiver by either

blood or marriage. Care is offered in the provider's home. LNR operations do not require Community Care Facility licenses. However, LNR operators can register with the local Child Care Resource and Referral (CCRR) program, once they have met the CCRR membership requirements. This enables them to be listed on a referral registry. LNR operations must meet Provincial standards in order to be eligible to register with a CCRR. Number of daycare spaces is an underestimate of the number of children served by these spaces, as some children are served part-time.

Source

Westcoast Child Care Resource Centre and municipalities, by request
Child Care Options Resource & Referral Program, Surrey

Link

<http://www.wstcoast.org/>

Average and Median Expenditures on Child Care

Data Summary

The average annual expenditure on child-care costs in Metro Vancouver in 2007 was \$4,596, while the median was \$2,450.

Date

2007

Geography

Canada, British Columbia, and CMAs: Toronto, Montreal, and Metro Vancouver

Description

The average annual expenditure on child care in Metro Vancouver in 2007 was \$4,596, significantly higher than both British Columbia (\$3,633) and Canada (\$3,047). The median expenditure on child care in Metro Vancouver in 2007 was \$2,450, was significantly higher than both British Columbia (\$1,800) and Canada (\$1,800).

	2007	
	Average Expenditure (\$)	Median Expenditure (\$)
Canada	3,047	1,800
B.C.	3,633	1,800
Metro Vancouver	4,596	2,450

Comparison

The average expenditure on child care in Metro Vancouver in 2007 was \$4,596, higher than Toronto (\$4,281) and significantly higher than Montreal (\$2,130). The median expenditure on child care in Metro Vancouver in 2007 was \$2,450, higher than Toronto (\$2,100) and significantly higher than Montreal (\$1,700).

	Toronto	Montreal	Metro Vancouver
Average expenditure	\$4,281	\$2,130	\$4,596
Median expenditure	\$2,100	\$1,700	\$2,450

Data Considerations

These average and median expenditures only represent the households reporting this expenditure (i.e households with child care expenditures).

Source

Survey of Household Spending, 2007 published 2008 (RY 2007 62FP0031)

Link

N/A

Child Care Costs

Data Summary

The cost of child care in the City of Vancouver has continued to rise between 2006 and 2009, with increases anywhere from 10% to 68% depending on the type of child care.

Date

2009

Geography

Municipalities of Vancouver, Burnaby, North Shore

Description

The cost of child care can be a barrier for parents wishing to enter the labour force. While there are government programs available to make child care more accessible for low-income families, most families still pay the majority of child care costs.

The cost of child care in the City of Vancouver continued to rise significantly between 2006 and 2009. The cost of licensed care for infants and toddlers increased by at least 17 % in the family child care system and by 10% in group child care system. The cost of licensed group care for children in half day kindergarten (who require child care before or after school) increased 23% between

2006 and 2009. The most significant increase was for out-of-school care (before and after school care) for children aged 6-12 years, which saw an increase of 68% from 2006 to 2009.

Licensed Family Child Care	2006	2007	2008	2009	% Change between 2006 and 2009
INFANT (6WKS-18MOS)	856	911	965	1013	18%
TODDLER (19MOS-3YRS)	814	869	916	959	18%
3-5 YEARS	739	806	838	868	17%
KINDERCARE(In 1/2 Day Kindergarten)	597	598	612	-	n/a
SCHOOL AGE (6-12 YEARS) before and after school care	387	478	466	650	68%

Licensed Group Child Care	2006	2007	2008	2009	% Change between 2006 and 2009
INFANT (6WKS-18MOS)	998	1080	1091	1103	11%
TODDLER (19MOS-3YRS)	955	991	996	1046	10%
3-5 YEARS	636	675	697	748	18%
KINDERCARE(In 1/2 Day Kindergarten)	614	626	673	758	23%

To compare these costs with other municipalities in the region, the City of Vancouver has the highest average cost of childcare for infants and toddlers, but average costs for preschool and kindercare are higher on the North Shore, and lower in Burnaby.

Average Cost and Range of Costs for Licensed Group Child Care, Selected Municipalities, 2009

	Infants and Toddlers (0-3 yrs)		Preschoolers (3-5 yrs)		Kindercare (6 -12 yrs)	
	Monthly Average (\$)	Monthly Range (\$)	Monthly Average	Monthly Range (\$)	Monthly Average	Monthly Range (\$)

			(\$)		(\$)	
City of Vancouver	1,074.50	n/a	748	n/a	758	n/a
City of Burnaby	1,028	791-1,370	692	519-1,231	380	292-602
North Shore	1,067.55	204-1,350	796.25	185-1,800	820.73	470-1,800
Comparison						
N/A						
Data Considerations						
<p>Licensed family care is offered at the provider's home. The provider is licensed to care for up to 7 children.</p> <p>Licensed group care is offered in a child care facility. The centre must have 3 providers for every 12 children under the age of 3 years. The centre must also have 3 providers for every 25 children over the age of 3 years.</p> <p>LNR or "licensed not required" family child care programs are defined as operations which provide care for no more than two children at a given time who are unrelated to the caregiver by either blood or marriage. Care is offered in the provider's home. LNR operations do not require Community Care Facility licenses. However, LNR operators can register with the local Child Care Resource and Referral (CCRR) program, once they have met the CCRR membership requirements. This enables them to be listed on a referral registry. LNR operations must meet Provincial standards in order to be eligible to register with a CCRR.</p>						
Source						
Westcoast Child Care Resource Centre, Child Care Fee Surveys, 2006, 2007, 2008, 2009 Cities of Burnaby and North Vancouver, District of North Vancouver, by request. Data for these areas are as of August-September, 2009.						
Link						
http://www.wstcoast.org/parents/fees.html						

Children's Vulnerability
Data Summary
In 2008/2009, 29.4 % of children in metro Vancouver were vulnerable on at least one of the 5 Early Development Index scales, and 15 % had difficulties in communication and general knowledge.
Date
2001-2009
Geography

Metro Vancouver Municipalities

Description

The Early Development Instrument (EDI) is a questionnaire designed to measure children's development in kindergarten. It's a checklist that kindergarten teachers complete for each child in their class.

The 5 scales that constitute the EDI are:

- **Physical Health and Well-Being** : Fine and gross motor development, levels of energy, daily preparedness for school (tired, late, hungry), washroom independence, established handedness
- **Social Competence** : Cooperation and respect for others (children and adults), ability to work within the school environment, socially appropriate behavior during school activities, self-control, self-confidence
- **Emotional Maturity** : pro-social behavior (helping, tolerance, empathy), aggressive behavior, anxiety, hyperactivity, inattention, impulsiveness, informal, peer-to-peer interaction
- **Language and Cognitive Development**: Interest in books, reading, language-related activities (rhyming, group reading), literacy (ability to recognize letters, read and write simple words), interest in simple math related activities, numeracy (ability to recognize and compare numbers, count, sort...)
- **Communication and General Knowledge** : ability to clearly communicate one's own needs and understand others in English, clear articulation, active participation in story-telling, interest in and general knowledge about the world

The index "1+ Vulnerable" is the percentage of children who are vulnerable on at least one of the five scales.

Children's vulnerability is increasing across the Metro Vancouver region on physical health and well-being, social competence, emotional maturity, and communication and general knowledge scales. The only EDI scale on which vulnerability is not increasing is language and cognitive development, where just under 10% (9.9%) of children were vulnerable in 2009. At the subregional scale, there is slightly more variation; New Westminster stands out for gains made in decreasing children's vulnerability in all scales from 2001-2009.

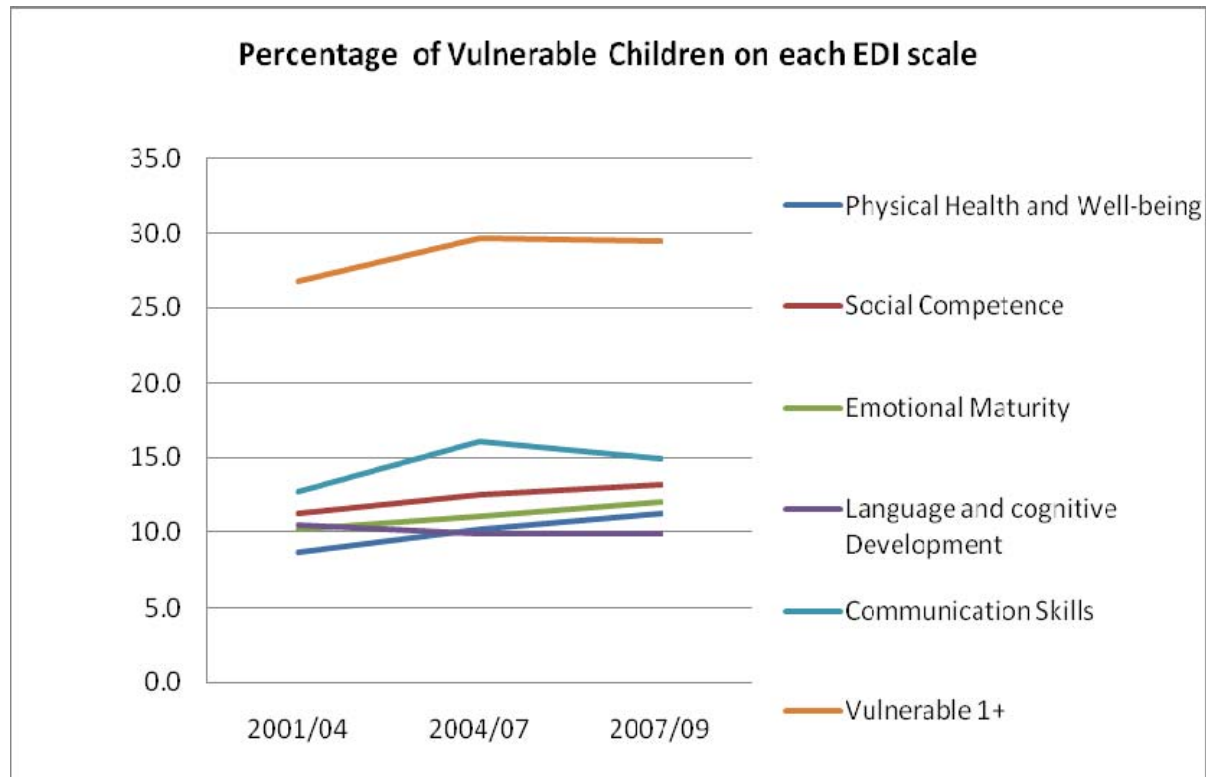
% of Children Vulnerable on Early Development Index Scales, by Subregion

Physical Health and Well-being	Social Competence	Emotional Maturity

	2001/04	2004/07	2007/09	2001/04	2004/07	2007/09	2001/04	2004/07	2007/09
Burnaby	9	9.7	9.7	14.1	14	12.6	9.9	11.4	11.2
Coquitlam	7.3	6.6	10	8	7.9	12.5	9.3	8.3	11
Delta	6.6	10.6	11.3	7.8	14.5	12.7	6.8	12	12.6
Langley	7.5	7.8	10.2	8.9	9.7	10.8	8.5	9.2	10.8
Maple Ridge-Pitt Meadows	10.6	10	11.5	12.6	11.8	14.5	9.7	9.8	9.6
New Westminster	13	9.2	7	15.3	13.8	8.3	13.8	12.9	7.2
North Vancouver	6.5	9	7.8	10.3	9.9	10.9	8.8	9.8	11.6
Richmond	8	6.8	10.2	14.3	12.9	15.2	11.4	11	12.4
Surrey	7.7	10.9	11.7	10.1	12.7	12.1	8.8	10.9	11.3
Vancouver	11.7	14.2	14.8	13.9	15.8	16.4	14.1	13.9	15.7
West Vancouver	5.7	6.7	7.6	4.7	7.3	10.3	9.3	8.3	10
Metro Vancouver	8.7	10.1	11.3	11.2	12.5	13.2	10.2	11.1	12.1

	Language and cognitive Development			Communication Skills			Vulnerable 1+		
	2001/04	2004/07	2007/09	2001/04	2004/07	2007/09	2001/04	2004/07	2007/09
Burnaby	16.1	14.5	13	17	20.6	17.6	33.2	33.2	31.8
Coquitlam	8.6	7.4	8	8.6	13.2	12.6	20.3	23.2	27.2
Delta	8.9	10.7	11	9.3	14.6	11.2	21.9	30.1	26.6
Langley	7.8	9.1	7.7	6.3	10.2	11.4	19.5	22.8	24.9
Maple Ridge-Pitt Meadows	8.8	8.6	8.8	6.2	9.8	12.4	23.3	24.6	25.4
New Westminster	12	10.1	9	18.6	16.4	11	32.9	29.8	24.2
North Vancouver	6.9	7.9	8.1	7.2	11.4	10.5	20.3	24	22.7
Richmond	10.5	7.7	8.3	14.3	17.2	16.8	29.5	29.5	29.9
Surrey	12.5	11.6	11.2	12.2	15.6	13.6	26.1	30.3	28.4
Vancouver	9.9	9.8	10.6	20	22.5	21.5	34.5	37	37.8

West Vancouver	3.2	2.5	3	5.4	5.4	6.8	14	18.9	20.8
Metro Vancouver	10.4	9.9	9.9	12.7	16.1	14.9	26.7	29.6	29.4



Comparison

N/A

Data Considerations

2001/04 and 2004/07 data are calculated as a three-year average. 2007/09 data is only calculated with the two most recent surveys.

Source

Human Early Learning Partnership (HELP) at UBC

Link

<http://www.earlylearning.ubc.ca/EDI/data.html>

YOUTH AND TRANSITION AGE

Youth Mental Health					
Data Summary					
In 2010, there are at least 27,139 spaces in child care facilities in Vancouver, Surrey and Burnaby, as well as the North Shore municipalities, combined.					
Date					
2005, 2007-2009					
Geography					
Vancouver Region's Health Service Delivery Areas: Fraser North, Fraser South, Richmond, North Shore/ Coast Garibaldi and Vancouver; Canada; B.C.; Toronto (CMA); Montreal (CMA); Calgary (CMA)					
Description					
The percent of youth (12-19 years old) who rated their own mental health as very good or excellent in Metro Vancouver was higher than the B.C. average but lower than the Canadian average. Trends at the subregional level are mixed, with a troubling dip in high ratings of youth mental health south of the Fraser and an upward burst for youth in Richmond and Vancouver.					
	2005	2007	2008	2009	% change, 2005-2009
Canada	77.0	77.5	78.7	77.4	+0.5
British Columbia	77.5	75.1	80.9	73.8	-4.8
Metro Vancouver	76.0	74.5	83.8	75.9	-0.1
Vancouver	73.7	77.6	82.7	84.4	+14.5
North Shore/Coast Garibaldi	81.3	60.5	86.4	83.3	-2.5
Fraser North	79.7	69.5	90.0	79.3	-0.8
Fraser South	74.4	84.9	82.1	64.2	-13.7
Richmond	68.0	61.2	69.5	81.1	+19.3
Comparison					

In comparison with youth in Toronto and Calgary, Vancouver youth are less like to rate their mental health very good or excellent. Trends in Toronto and Calgary are also toward improving youth mental health, while there is little change in Metro Vancouver.

	2005	2007	2008	2009	% change, 2005-2009
Metro Vancouver	76.0	74.5	83.8	75.9	-0.1
Metro Toronto	77.0	77.1	89.7	86.7	+12.6
Metro Montreal	77.0	78.1	83.0	75.9	-1.4
Calgary Region	80.0	81.7	82.6	81.7	+2.1

Data Considerations

Based on the CCHS sample of 65,000 respondents each year, nation-wide. Data collection now occurs every year, rather than every two years as was the case prior to 2007. The North Shore/Coast Garibaldi Health Service Delivery Area also includes the sunshine coast, Powell River, Pemberton and Whistler which are not part of the Vancouver region. Survey-specific population estimates for 2007 are used for 2007, 2008 and 2009.

Source

Statistics Canada, Canadian Community Health Survey

Link

<http://www.statcan.gc.ca/pub/82-221-x/2008001/5202308-eng.htm>

Youth Consumption of Fruits and Vegetables

Data Summary

Less than half of Metro Vancouver youth (45.6%) consume five or more fruits and vegetables per day.

Date

2005, 2007-2009

Geography

Vancouver Region's Health Service Delivery Areas: Fraser North, Fraser South, Richmond, North Shore/ Coast Garibaldi and Vancouver; Canada; B.C.; Toronto (CMA); Montreal (CMA); Calgary (CMA)

Description

Among youth in Metro Vancouver aged 12-19 years, 45.6% consumed five or more fruits and vegetables per day in 2009. Less than half of Canadian youth (49.2%) and even fewer B.C. youth (47.8%) consumed fruits and vegetables at this rate. For the nation and the province as a whole, these rates are rising, and they are rising in Metro Vancouver as well, albeit more slowly.

There is a wide range in fruits and vegetable consumption at a subregional level, with Vancouver youth consuming the least and youth south of the Fraser consuming the most fruits and vegetables.

	2005	2007	2008	2009	% change, 2007- 2009
Canada	49	48	49.3	49.2	+2.5
British Columbia	45.8	46.6	50.3	47.8	+2.6
Metro Vancouver	n/a	45.2	52.0	45.6	+0.9
Vancouver	n/a	39.6	60.6	34.8	-12.1
North Shore/Coast Garibaldi	n/a	45.4	63.2	51.2	+12.8
Fraser North	n/a	50.1	60.3	46	-8.2
Fraser South	n/a	43.9	39.2	52.1	+18.7
Richmond	n/a	47.9	40.4	36.4	-24.0

Comparison

Compared to their counterparts in Toronto, Montreal, and Calgary, Vancouver youth consume fruits and vegetables less frequently. In Montreal in particular, approximately 60% of youth consume five or more fruits and vegetables per day.

	2007	2008	2009	% change, 2007- 2009
Metro Vancouver	45.2	52.0	45.6	+0.9
Metro Toronto	55.3	48.9	54.6	-1.3
Metro Montreal	60.4	63.5	59.4	-1.7
Calgary Region	38.9	44.0	57.7	+48.3

Data Considerations

Based on the CCHS sample of 65,000 respondents each year, nation-wide. Data collection now occurs every year, rather than every two years as was the case prior to 2007. The North Shore/Coast Garibaldi Health Service Delivery Area also includes the sunshine coast, Powell River, Pemberton and Whistler which are not part of the Vancouver region. Survey-specific population estimates for 2007 are used for 2007, 2008 and 2009.

Source

Link

<http://www.statcan.gc.ca/pub/82-221-x/2008001/5202308-eng.htm>

Youth Unemployment

Data Summary

In 2009, the youth unemployment rate in Metro Vancouver was 12.0%

Date

2000, 2004-2009

Geography

Canada, British Columbia, and CMAs: Toronto, Montreal, and Metro Vancouver

Description

Youth (15-24 years old) in metro Vancouver had an unemployment rate of 12% in 2009. After decreases in preceding years, this rate increased by 57.9 % since 2008. The rate is marginally lower than the BC average of 13.2% and lower than the national average of 15.3%.

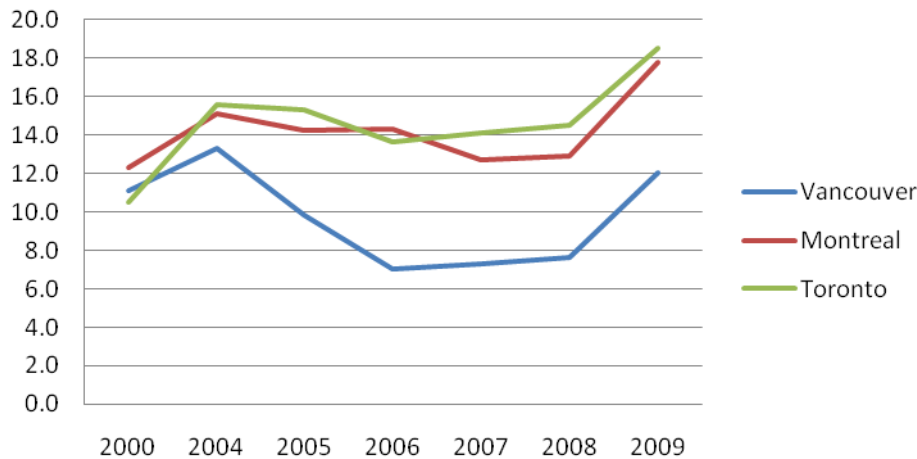
	2000	2004	2005	2006	2007	2008	2009	% Change, 2008- 2009
Canada	12.7	13.4	12.4	11.6	11.2	11.6	15.3	+31.9
BC	13.7	13.4	10.1	8.2	7.6	8.4	13.2	+57.1
Metro Vancouver	11.1	13.3	9.8	7.0	7.3	7.6	12.0	+57.9

Youth Unemployment Rates, Monthly

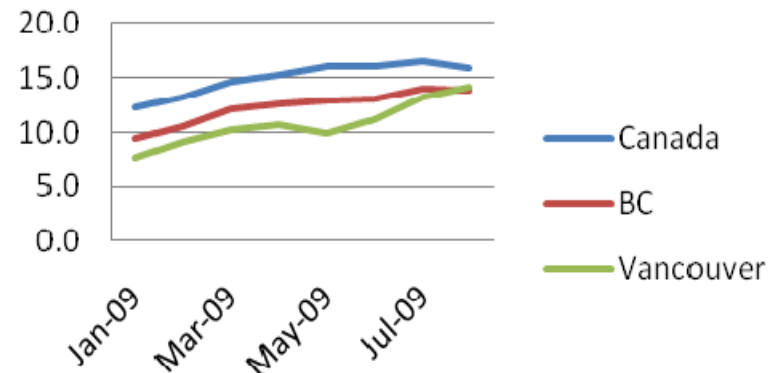
	Jan- 09	Feb- 09	Mar- 09	Apr- 09	May- 09	Jun- 09	Jul- 09	Aug- 09
Canada	12.3	13.2	14.7	15.2	16.1	16.0	16.6	15.8
BC	9.5	10.6	12.1	12.6	12.9	13.1	14.0	13.9

Metro Vancouver	7.7	9.1	10.2	10.7	9.9	11.1	13.2	14.2
	Sep-09	Oct-09	Nov-09	Dec-09	Jan-10	Feb-10	Mar-10	Apr-10
Canada	15.7	14.8	14.8	14.5	14.8	14.7	15.5	15.7
BC	13.7	13.5	14.1	14.0	13.8	13.1	13.3	13.2
Metro Vancouver	13.3	12.8	13.2	13.3	13.1	12.7	13.4	13

Unemployment rate for youth 2000-2009



Unemployment rate for youth January 2009-April 2010



Comparison

Youth were hit by the recession of 2008 as was the labour force in general, and even higher youth unemployment resulted in Montreal and Toronto than occurred in Metro Vancouver.

2000	2004	2005	2006	2007	2008	2009	% Change, 2008-2009
7.7	9.1	10.2	10.7	9.9	11.1	13.2	19.8

Metro Vancouver	11.1	13.3	9.8	7.0	7.3	7.6	12.0	+57.9
Metro Montreal	12.3	15.1	14.2	14.3	12.7	12.9	17.8	+38.0
Metro Toronto	10.5	15.6	15.3	13.6	14.1	14.5	18.5	+27.6

Data Considerations

None

Source

Data collected by CFC

Link

N/A

HEALTH

Infant Mortality Rate

Data Summary

The infant mortality rate in Metro Vancouver was slightly lower in 2007 than the aggregated average from 2002-2006.

Date

2002-2007

Geography

Metro Vancouver Local Health Service Delivery Areas

Description

Infant mortality rates measure the number of deaths of infants less than one year of age per 1,000 live births. More than just a measure of child health, the rate of infant deaths is associated with socio-economic conditions, access to health care, the effectiveness of preventative care and the health status of women of childbearing age. It is therefore commonly used as an indicator of general health status, well-being and standard of living.

Infant Mortality Rate in Metro Vancouver and Metro Vancouver Local Health Areas, 2002-2006, 2007

	Rate per 1,000 live births 2002- 2006 (average)	Rate per 1,000 live births 2007	Change
Langley	3.24	3.75	0.51
Delta	3.54	1.16	-2.38
Richmond	3.09	4.01	0.92
New Westminster	2.81	5.76	2.95
Burnaby	2.29	2.15	-0.14
Maple Ridge	2.92	6.39	3.47
Coquitlam	4.13	2.8	-1.33
North Vancouver	2.55	1.66	-0.89
West Vancouver - Bowen Is	1.99	3.32	1.33
Vancouver - City Centre	2.43	1.09	-1.34
Vancouver - DTE	5.63	2.21	-3.42
Vancouver - NE	6.01	3.55	-2.46
Vancouver - Westside	4.82	3.48	-1.34
Vancouver - Midtown	4.44	7.71	3.27
Vancouver - South	4.21	4.55	0.34
Surrey	4.64	4.27	-0.37
South Surrey/White Rock	1.91	1.86	-0.05
Metro Vancouver Total/ Average	3.57	3.51	-0.05

Comparison

N/A

Data Considerations
None
Source
BC Vital Statistics Agency, 2007 Annual Report
Link
http://www.vs.gov.bc.ca/stats/annual/2007/pdf/ann07.pdf

Proportion of Low Birth Weight Babies

Data Summary

The proportion of babies being born in metro Vancouver who weigh less than 2,500 grams has been about the same since 2002. In 2008/09, 5.6% of babies were considered low birth weight, a slight decrease since 2007/2008.

Date

2001-2009

Geography

Vancouver Region's Health Service Delivery Areas: Fraser North, Fraser South, Richmond, North Shore/ Coast Garibaldi and Vancouver; Canada; B.C.; Toronto (CMA); Ottawa

Description

Low birth weight is a key determinant of infant survival, health, and development. It is also a measure of good prenatal health of mothers as well as the success, or presence, of successful prenatal programs. Babies born weighing less than 2,500 grams have been proven to be at a greater risk of having a disability or having diseases such as cerebral palsy, visual problems, learning disabilities and respiratory problems.

Less than 6% of babies born in metro Vancouver in 2008/09 were considered to be of low birth weight. This is slightly less than the national average. The rate of low birth weight babies decreased 6.7 % since 2007/2008, more than the decline at provincial or national scales.

Proportion of Low Birth Weight Babies (%) for Canada, BC and Metro Vancouver Health Service Delivery Areas, 2001-2009

2001-2002	2002-2003	2003-2004	2004-2005	2005-2006	2006-2007	2007-2008	2008-2009	% Change 2007-2009

Canada	5.7	5.9	6.0	6.0	6.1	6.2	6.1	6.0	-1.6
British Columbia	5.1	5.6	5.5	5.7	5.8	5.7	5.7	5.5	-3.5
Metro Vancouver	4.9	5.5	5.6	5.6	5.6	5.4	6.0	5.6	-6.7
<i>Vancouver</i>	4.8	4.8	4.8	5.2	4.8	4.8	5.6	4.2	-1.4
<i>North Shore/Coast Garibaldi</i>									-11.3
<i>Fraser North</i>	5.4	5.6	5.4	5.7	6.7	6.2	6.5	6.0	-7.7
<i>Fraser South</i>	4.5	5.8	6.2	5.4	5.2	4.6	5.9	6.8	+15.3
<i>Richmond</i>	4.9	5.9	6.0	6.0	6.3	6.5	6.2	5.5	-11.3

Comparison

Rates of low birth weight babies are lower in metro Vancouver than they are in metro Toronto, and in Toronto the rate is rising. Rates here are comparable with those in Ottawa.

	2001-2002	2002-2003	2003-2004	2004-2005	2005-2006	2006-2007	2007-2008	2008-2009	% Change 2007-2009
Metro Vancouver	4.9	5.5	5.6	5.6	5.6	5.4	6.0	5.6	-6.7
Toronto	6.2	6.3	6.7	6.6	6.6	6.7	6.9	7.0	+1.4
Ottawa	5.7	5.9	6.0	5.9	6.0	6.2	6.3	5.8	-7.9

Data Considerations

Rates use population weighted averages of the rates for the health regions. The increase in low weight births could be attributable in part to advances in medical technologies and procedures that are enabling more births and greater survival rates of pre-term infants.

Source

Data collected by CFC

Link

N/A

VULNERABILITY

Child poverty rate

Data Summary

In 2008, 13.1 % of children live in poverty.

Date

2000-2008

Geography

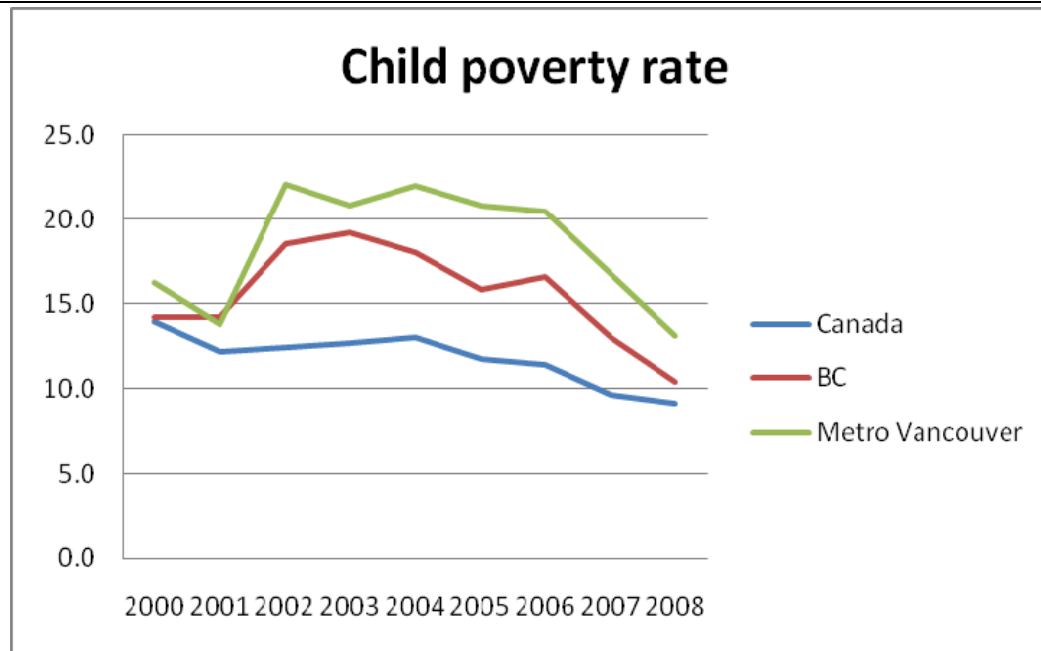
Canada, British Columbia, and CMAs: Toronto, Montreal, and Metro Vancouver

Description

Child poverty, measured as the Low-Income Cut Off, declined in Metro Vancouver, along with B.C. and Canada as a whole, from 2004-2008.

Incidence of Child Poverty Using LICO, After-Tax 2000-2008

	2000	2001	2002	2003	2004	2005	2006	2007	2008
Canada	13.9	12.2	12.4	12.7	13.0	11.7	11.4	9.6	9.1
BC	14.2	14.2	18.5	19.2	18.0	15.8	16.6	13.0	10.4
Metro Vancouver	16.2	13.8	22.1	20.8	22.0	20.8	20.5	16.7	13.1

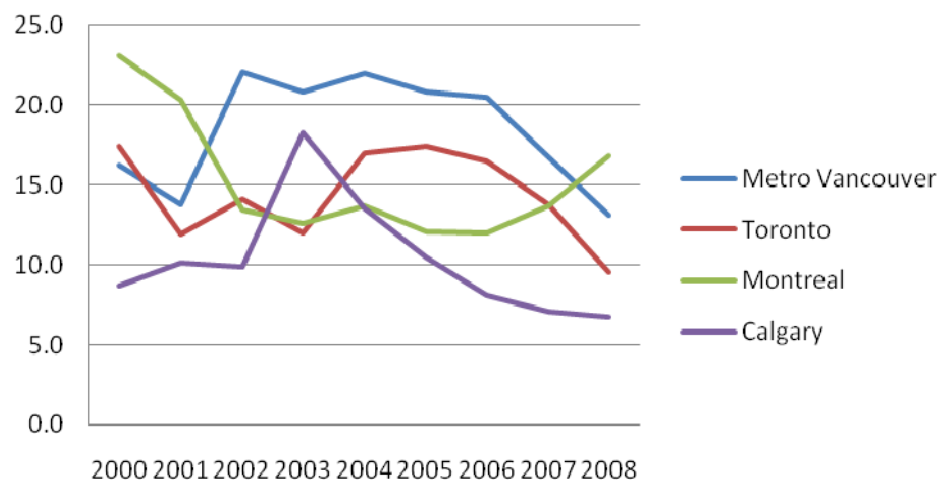


Comparison

Incidence of Child Poverty in Vital Signs CMAs Using LICO, After-Tax 2000-2008

	2000	2001	2002	2003	2004	2005	2006	2007	2008
Metro Vancouver	16.2	13.8	22.1	20.8	22.0	20.8	20.5	16.7	13.1
Metro Toronto	17.4	11.9	14.1	12.0	17.0	17.4	16.5	13.8	9.5
Metro Montreal	23.1	20.3	13.4	12.6	13.7	12.1	12.0	13.7	16.8
Calgary Region	8.7	10.1	9.9	18.3	13.5	10.5	8.1	7.1	6.7

Child poverty rate



Data Considerations

Children are defined as persons under 18 years.

Low-income cutoffs (LICO) represent an income threshold where a family is likely to spend 20% more of its income on food, shelter and clothing than the average family, leaving less income available for other expenses such as health, education, transportation and recreation. LICOs are calculated for families and communities of different sizes.

Source

Data collected by CFC

Link

N/A

Poverty Rate Among Children Under 6

Data Summary

The prevalence of low-income among children under 6 in Metro Vancouver in 2005 was 21.5% before-tax and 17.25% after-tax.

Date

2006

Geography				
Canada, British Columbia and CMAs: Toronto, Montreal, and Metro Vancouver				
Description				
<p>The prevalence of low-income among children under 6 in Metro Vancouver in 2005 was 21.5% before-tax and 17.25% after-tax, in British Columbia it is 19.6% and 15.1% respectively and in Canada it is 19.3% and 14.5% respectively. The prevalence of low-income among children under 6 is highest in Metro Vancouver (21.5% before-tax) when compared to British Columbia (19.6%) and Canada (19.3%). In addition, the decrease in prevalence of children experiencing low-income before-tax and after-tax is smallest in Metro Vancouver (20.0%) when compared to British Columbia (23.0%) and Canada (24.9%).</p>				
		Canada	B.C.	Metro Vancouver
	Total Children Under 6	1,972,0250	236,780	126,105
	% Low Income Before Tax	19.3%	19.6%	21.5%
	% Low Income After Tax	14.5%	15.1%	17.2%
Comparison				
<p>When compared to Toronto and Montreal, the prevalence low-income in children under 6 in Metro Vancouver in 2005 is neither the highest nor the lowest. In Metro Vancouver, the prevalence of low-income before-tax and after-tax is 21.5% and 17.2% respectively, in Toronto it is 22.9% and 17.9% respectively, and in Montreal it is 25.2% and 19.3% respectively. The difference in prevalence of low-income in children under 6 between before-tax and after-tax is smallest in Metro Vancouver (4.3%) when compared to Toronto (5.0%) and Montreal (5.9%).</p>				
		Metro Toronto	Metro Montreal	Metro Vancouver
	Total Children Under 6	356,690	228,110	126,105
	% Low Income Before Tax	22.9%	25.2%	21.5%
	% Low Income After Tax	17.9%	19.3%	17.2%
Data Considerations				
Low income is defined by LICO.				
Source				
Statistics Canada, 2006 Census				
Link				

N/A

Access by Children to Food Banks

Data Summary

Children continue to be over-represented among food bank recipients in Canada. In 2009, 37.1% of food bank clients were under 18.

Date

2008-2009

Geography

Provinces (Western Canada); Metro Vancouver

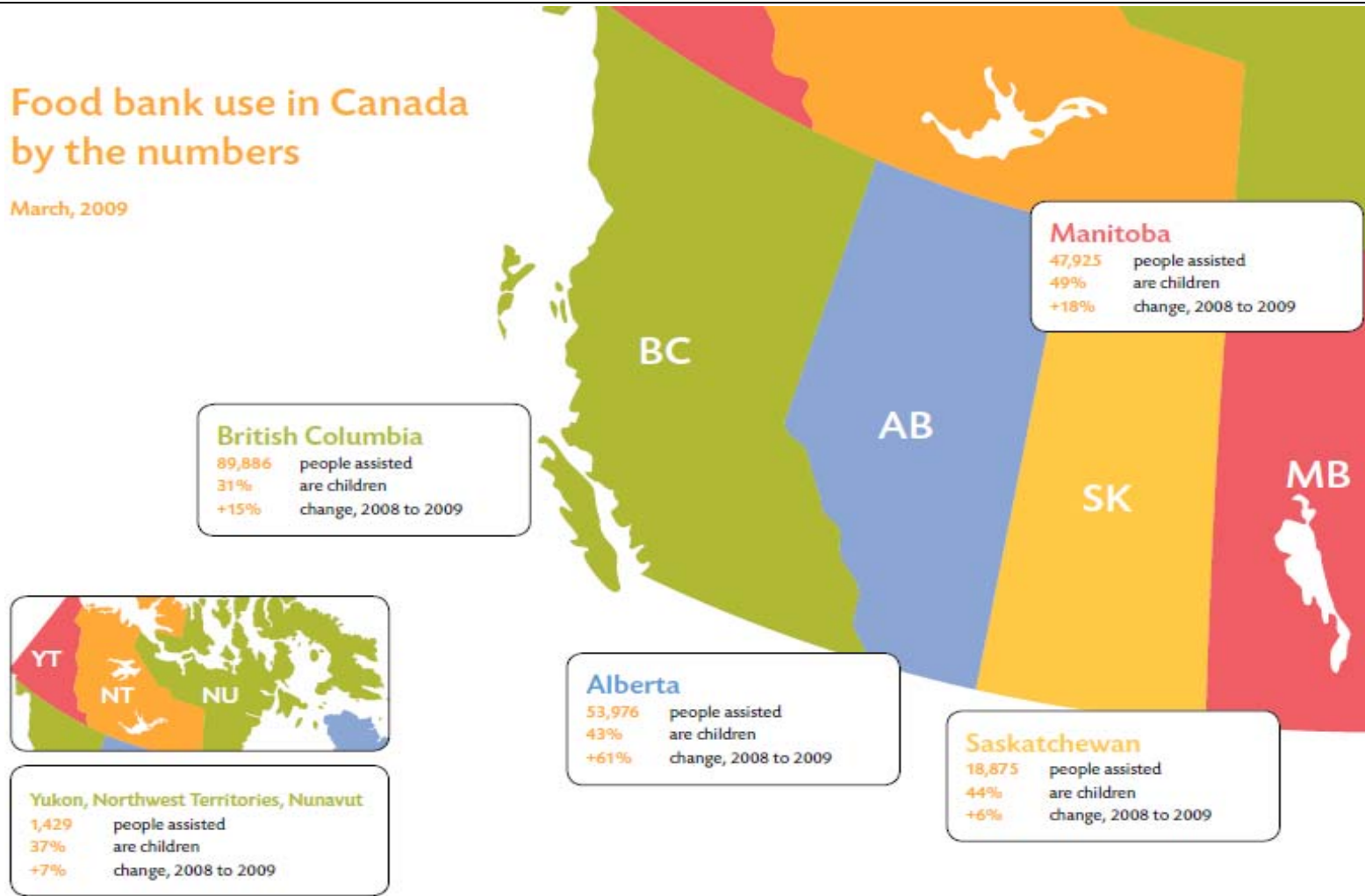
Description

Of the 89,886 people assisted by food banks in British Columbia in 2009, 31% of them were children. This represents a 15% increase since 2008.

In Metro Vancouver, the Greater Vancouver Food Bank Society provides access to emergency food for residents in need. The GVFBS estimates that 40% of the individuals they serve are children. The GVFBS feeds approximately 9,000 people each week through 15 depots located in Burnaby, New Westminister, the City of Vancouver, and the North Shore. The GVFBS also provides access to food for another 16,000 individuals each week through aid to over 100 agencies region-wide.

Food bank use in Canada by the numbers

March, 2009



Comparison

See map above.

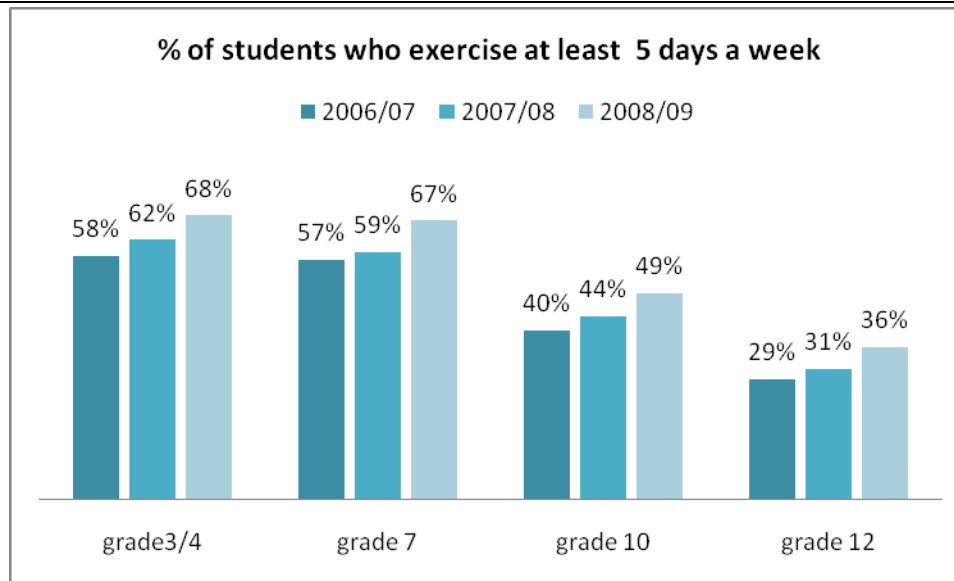
Data Considerations

Richmond, Surrey, Langley and Coquitlam also have independently operated food banks, not included in the figures above for

the Greater Vancouver Food Bank Society.
Source
Canadian Association of Food Banks <u>Hunger Count 2009</u> Greater Vancouver Food Bank Society, by request
Link
http://www.foodbankscanada.ca/documents/HungerCount2009NOV16.pdf http://www.foodbanksbc.ca/about-hunger.html

PLAY AND RECREATION

Physical Activity Rates Among Youth
Data Summary
Young people's rates of physical activity decline as they move from children to teenagers, although rates of physical activity are on the rise for all grade levels surveyed. Just under three-quarters of youth aged 12-19 years engage in moderately active or active physical activity during their leisure time.
Date
2005-2009
Geography
Vancouver Region's Health Service Delivery Areas: Fraser North, Fraser South, Richmond, North Shore/ Coast Garibaldi and Vancouver; Canada; B.C.; Toronto (CMA); Montreal (CMA); Calgary (CMA)
Description
Whereas 68% of students in grades 3-4 reported that they exercise at least five days per week in 2008/2009, this number dropped to 67% for grade 7, 49% for grade 10, and 36% for grade 12 students. Nevertheless, each group was exercising less frequently in 2006/2007 than was the case in 2008/2009.



Based on the Canadian Community Health Survey data, just under three-quarters of youth aged 12-19 years engage in moderately active or active physical activity during their leisure time. This rate is up in B.C. as a whole but fairly stable in Metro Vancouver. More youth are physically active on the North Shore than elsewhere in the region.

	2005	2007	2008	2009	% change, 2005-2009
Canada	71.1	70.5	69.2	71.0	-0.1
British Columbia	74.1	73.5	72.9	75.9	+2.4
Metro Vancouver	73.8	69.1	73.6	73.6	-0.3
Vancouver	71.8	76.5	71.2	52.6	-26.7
North Shore/Coast Garibaldi	74.8	73.7	73.3	85.1	+13.8
Fraser North	76.1	58.3	69.8	79.2	+4.1
Fraser South	76.9	74.2	78.5	78.8	+2.5
Richmond	74.4	58.4	72.5	69.1	-7.1

Comparison

Compared to their counterparts in Toronto and Montreal, Vancouver youth were more likely to be physically active during their leisure time. They were less physically active than Calgarian youth.

	2007	2008	2009	% change, 2007-2009
Metro Vancouver	69.1	73.6	73.6	+6.5
Metro Toronto	65.9	69.4	65.9	0
Metro Montreal	66.4	60.6	70.7	+6.5
Calgary Region	68.5	69.8	75.8	+10.7

Data Considerations

CCHS data is based on the CCHS sample of 65,000 respondents each year, nation-wide. Data collection now occurs every year, rather than every two years as was the case prior to 2007. The North Shore/Coast Garibaldi Health Service Delivery Area also includes the sunshine coast, Powell River, Pemberton and Whistler which are not part of the Vancouver region. Survey-specific population estimates for 2007 are used for 2007, 2008 and 2009.

Source

BC Ministry of education district reports Satisfaction survey
 Statistics Canada, Canadian Community Health Survey

Link

http://www.bced.gov.bc.ca/reporting/district_data_summary.php
<http://www.statcan.gc.ca/pub/82-221-x/2008001/5202308-eng.htm>